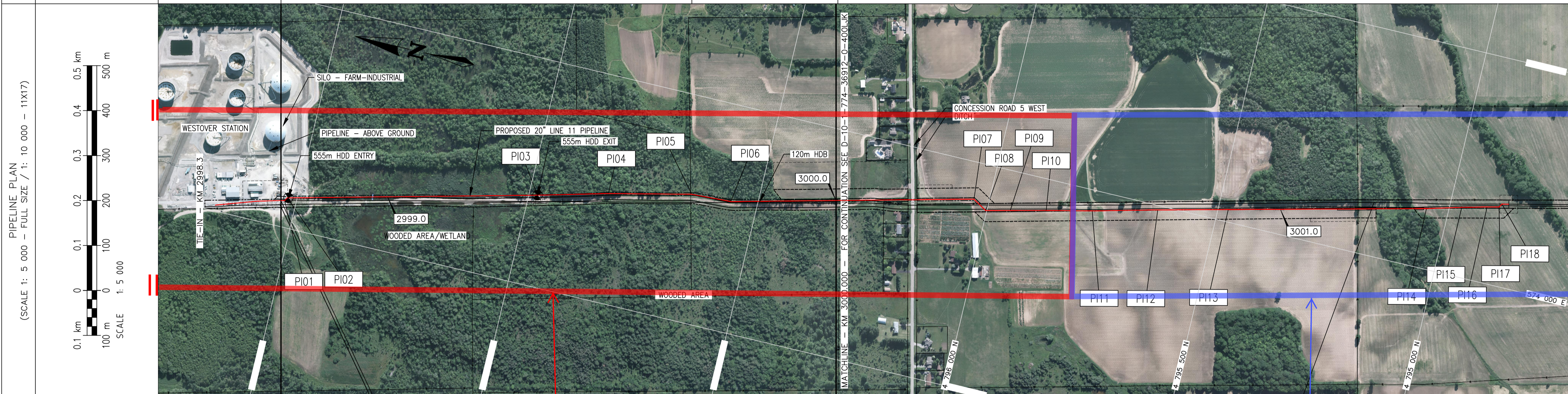


ENVIRONMENTAL (SEE NOTE 5)	SETTING	MITIGATION
TOPSOIL DEPTH (cm)	1.2 UP TO 20.0	WOODED AREA
VEGETATION - LAND USE	PLANT WOODED AREA	WOODED AREA/WETLAND
WILDLIFE		TO BE DETERMINED (TBD)
OTHER		TO BE DETERMINED (TBD)
SOIL HANDLING		TO BE DETERMINED (TBD)
TIMBER SALVAGE		TO BE DETERMINED (TBD)
RECLAMATION		TO BE DETERMINED (TBD)
OTHER		TO BE DETERMINED (TBD)

	PROPOSED R.O.W.
	POINT OF INFLECTION (PI)
	KILOMETRE POST
	AERIAL MARKER
	MITIGATION BOUNDARY FENCELINE
	RAILWAY
	SURVEYED SECTION LINE
	UNSURVEYED SECTION LINE
	QUARTER SECTION LINE

A	ACCESS ROAD / PRIVATE
B	BURIED CABLE(S)
C	CATHODIC TEST LEAD STATION
D	-
E	-
F	FOREIGN PIPELINE
G	MUNICIPAL/COUNTY GRID ROAD
H	NUMBERED HIGHWAY
I	FENCE (TEMPORARY)
J	TRAIL (INTERMITTENT ROAD)
K	UNNAMED WATERCOURSE
L	CANAL
M	AERIAL MARKER
N	NAMED WATERCOURSE
O	HOT BEND
P	POWER TRANSMISSION
Q	-
R	UNCASED RAILWAY
S	ANCHOR/SCREWS
T	TRANSITION
U	UNDEVELOPED R/A (NO FUTURE)
V	UNDEVELOPED R/A (FUTURE)
W	PIPELINE WARNING SIGN

RIGHT-OF-WAY	OWNERSHIP (TENANT)	R.O.W. (TRACT) NO.	SPECIAL REQUIREMENTS
	ENBRIDGE PIPELINES INC	175420013	
	MCCUNE, NOBLE WILBERT; MCCUNE, HELEN MARJORIE	175420197	



WC	WC	WATER COURSE		PRIMARY PIPELINE
RR	RR	RAIL ROAD		TRANSITION
PH	PH	PRIMARY HIGHWAY		HOT BEND
SH	SH	SECONDARY HIGHWAY		HEAVY WALL PIPE
GR	GR	GRID ROAD		ANCHOR/SCREWS
AC	AC	ACCESS ROAD		SET ON WEIGHTS
UR	UR	UNDEVELOPED R/A		CASED PIPE
GC	GC	GAS CO-OP		BOLT ON WEIGHTS
OL	OL	OIL PIPELINE		CONCRETE COATED PIPE
GL	GL	GAS PIPELINE		BLOCK VALVE W/ TP
WL	WL	WATER PIPELINE		CHECK VALVE W/ TP
OP	OP	OVERHEAD POWER		PIG TRAP
BP	BP	BURIED POWER		WARNING SIGN
OT	OT	OVERHEAD TELEPHONE		PIPE MATERIAL REF. AND LENGTH
BT	BT	BURIED TELEPHONE		CATHODIC PROTECTION AND TEST LEAD TYPE
BC	BC	BURIED CABLE		ENBRIDGE REFERENCE KILOMETRE POST
FN	FN	FENCE		AERIAL MARKER
SL	SL	SEISMIC LINE		

PI NUMBER	EASTING	NORTHING
TIE-IN	573556.67	4797533.98
PI01	573558.51	4797526.11
PI02	573565.74	4797521.62
PI03	573701.01	4796981.03
PI04	573741.37	4796828.43
PI05	573782.94	4796647.46
PI06	573787.26	4796559.36

CONSTRUCTION SCHEMATIC (SCALE: N.T.S.)	CONSTRUCTION SCHEMATIC (SCALE: N.T.S.)
<p>Class 2 Location</p> <p>-Location: North Westover Station to a Point 350 meters South of Concession Road 5 West</p> <p>-Approximate Length: 1,783 meters</p> <p>-Population Density: 1 Industrial Installation; 12 Dwellings</p> <p>-Population Description: The start of the replacement pipeline route is located within the boundaries of an industrial installation and in close proximity to single family residential dwellings and agricultural farm houses</p>	<p>Class 1 Location</p> <p>-Location: Remainder of the replacement pipeline route to the tie-in location at KP 3001.5</p> <p>-Approximate Length: 1,417 meters</p> <p>-Population Density: No existing permanent structures</p> <p>-Population Description: The remainder of the replacement pipeline route is generally located in thinly populated agricultural lands.</p>

EASEMENT/WORK SPACE	DISCLAIMER: TIE-IN LOCATION AND STATION TO BE FINALIZED DURING DETAIL DESIGN.

NO.	REVISION	DATE/BY	APPROVE
3	ISSUED FOR FEED	21 OCT 13 DLF	JF
2	FOR CLIENT REVIEW	31 OCT 13 DLF	JF
1	FOR CLIENT REVIEW	30 SEP 13 IM	JF
0	FOR CLIENT REVIEW	19 AUG 13 IM	JF

COPYRIGHT © This drawing is the property of Enbridge and shall not be reproduced either in whole or in part without written consent of Enbridge



TYPICAL DWG. (SEE CODE & INDEX)	
SPECIFIC LOCATION DETAIL DWG.	

NOTES:		MATERIAL SUMMARY (PIPE LENGTHS IN METERS)			
1.	DIMENSIONS AND STATIONING ARE IN METRES(m) UNLESS NOTED OTHERWISE.				
2.	TOTAL PIPE MATERIAL LENGTH IS BASED UPON HORIZONTAL DISTANCES BETWEEN MATCHLINES ROUNDED UP TO THE NEAREST m.				
3.	FIELD LOCATE AND CONFIRM ALL CROSSINGS AND ASSOCIATED WORK SPACE PRIOR TO INSTALLATION.				
4.	ENSURE ENBRIDGE REPRESENTATIVE AND CONTRACTOR HAVE COPIES OF APPROVED PLA'S, APPROVED C&R, EFR'S, ROAD USE AGREEMENTS, FACILITY CROSSING AGREEMENTS AND ANY OTHER APPLICABLE APPROVALS.				
5.	REFER TO ATTACHED LEGEND FOR ADDITIONAL ENVIRONMENTAL NOTES.				
6.	FULL R.O.W. STRIPPING UNLESS OTHERWISE NOTED IN LINE LIST.				
7.	A MINIMUM DEPTH OF COVER AT 0.9m AND A NORMAL DEPTH OF COVER AT 1.2m TO TOP OF PIPE FROM CONSTRUCTION GRADE, UNLESS OTHERWISE NOTED IN LINE LIST.				
8.	THEORETICAL PROFILE FROM DEM.				
NO.	DESCRIPTION	QUANTITY	NO.	DESCRIPTION	QUANTITY

KM 2998.3 TO KM 3001.5				
LINE 11 SEGMENT REPLACEMENT PROJECT				
WESTOVER (ON) STATION TO NANTICOKE JUNCTION				
CLASS LOCATION MAP				
DRAWN	DLF	CHECK	JF	APPROVE
DATE	29 OCT 13	SCALE	1:5000	APPROVE
EXHIBIT A sht 1				01