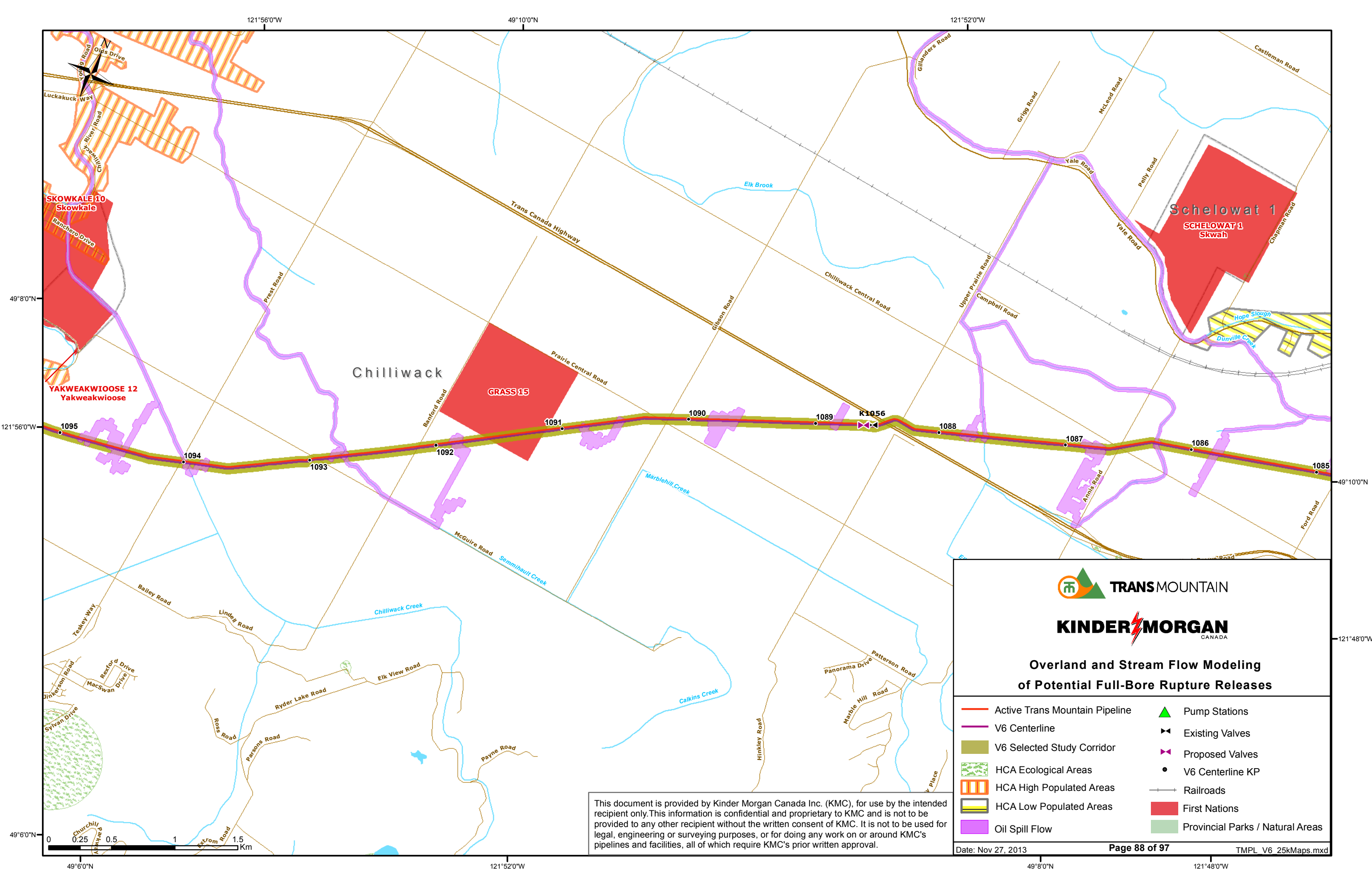


Overland and Stream Flow Modeling of Potential Full-Bore Rupture Releases

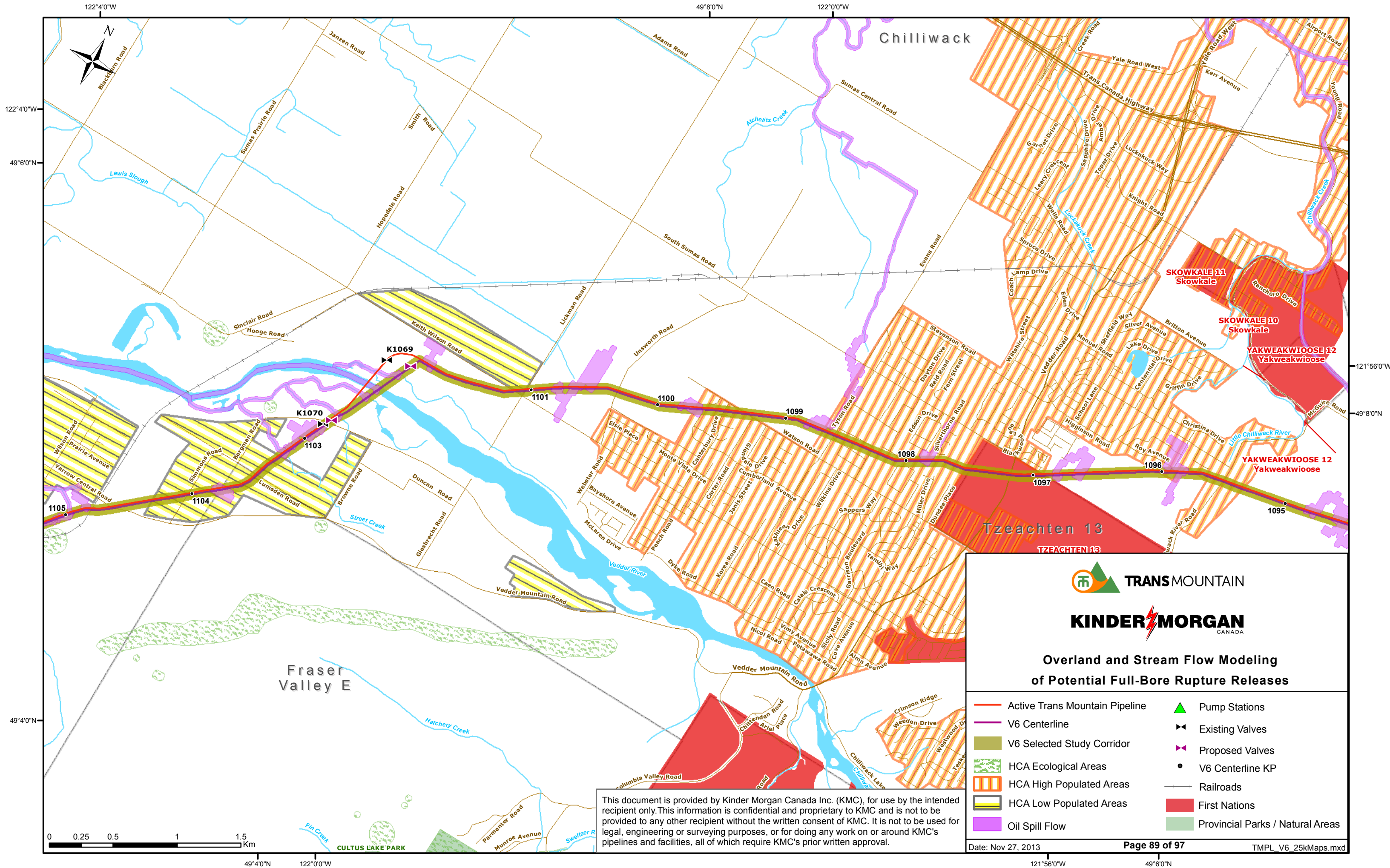
- | | |
|--------------------------------|----------------------------------|
| Active Trans Mountain Pipeline | Pump Stations |
| V6 Centerline | Existing Valves |
| V6 Selected Study Corridor | Proposed Valves |
| HCA Ecological Areas | V6 Centerline KP |
| HCA High Populated Areas | Railroads |
| HCA Low Populated Areas | First Nations |
| Oil Spill Flow | Provincial Parks / Natural Areas |




Overland and Stream Flow Modeling
of Potential Full-Bore Rupture Releases


- | | |
|--------------------------------|----------------------------------|
| Active Trans Mountain Pipeline | Pump Stations |
| V6 Centerline | Existing Valves |
| V6 Selected Study Corridor | Proposed Valves |
| HCA Ecological Areas | V6 Centerline KP |
| HCA High Populated Areas | Railroads |
| HCA Low Populated Areas | First Nations |
| Oil Spill Flow | Provincial Parks / Natural Areas |

This document is provided by Kinder Morgan Canada Inc. (KMC), for use by the intended recipient only. This information is confidential and proprietary to KMC and is not to be provided to any other recipient without the written consent of KMC. It is not to be used for legal, engineering or surveying purposes, or for doing any work on or around KMC's pipelines and facilities, all of which require KMC's prior written approval.

















This document is provided by Kinder Morgan Canada Inc. (KMC), for use by the intended recipient only. This information is confidential and proprietary to KMC and is not to be provided to any other recipient without the written consent of KMC. It is not to be used for legal, engineering or surveying purposes, or for doing any work on or around KMC's pipelines and facilities, all of which require KMC's prior written approval.

**TRANS MOUNTAIN**

**KINDER MORGAN**
CANADA

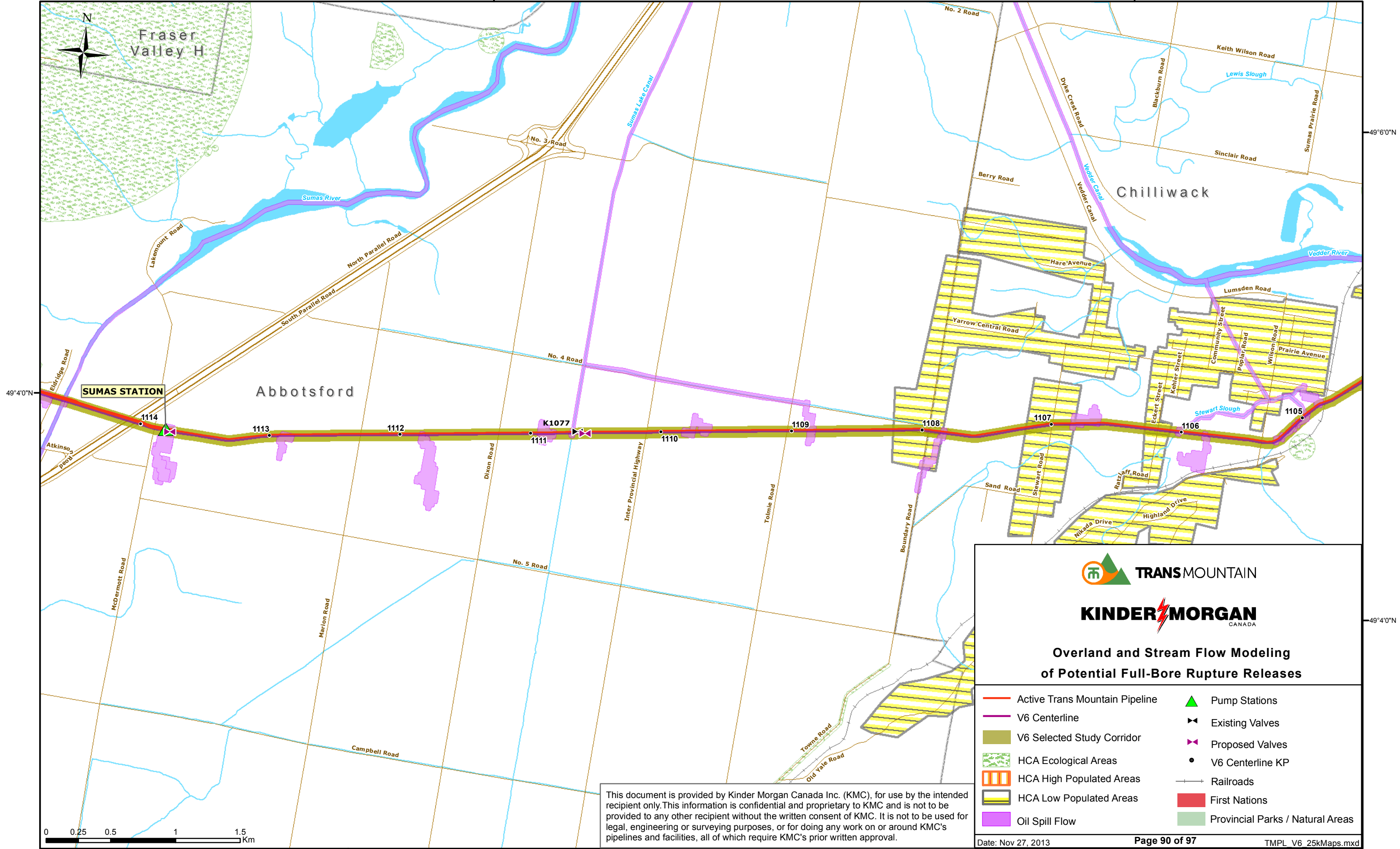
**Overland and Stream Flow Modeling
of Potential Full-Bore Rupture Releases**

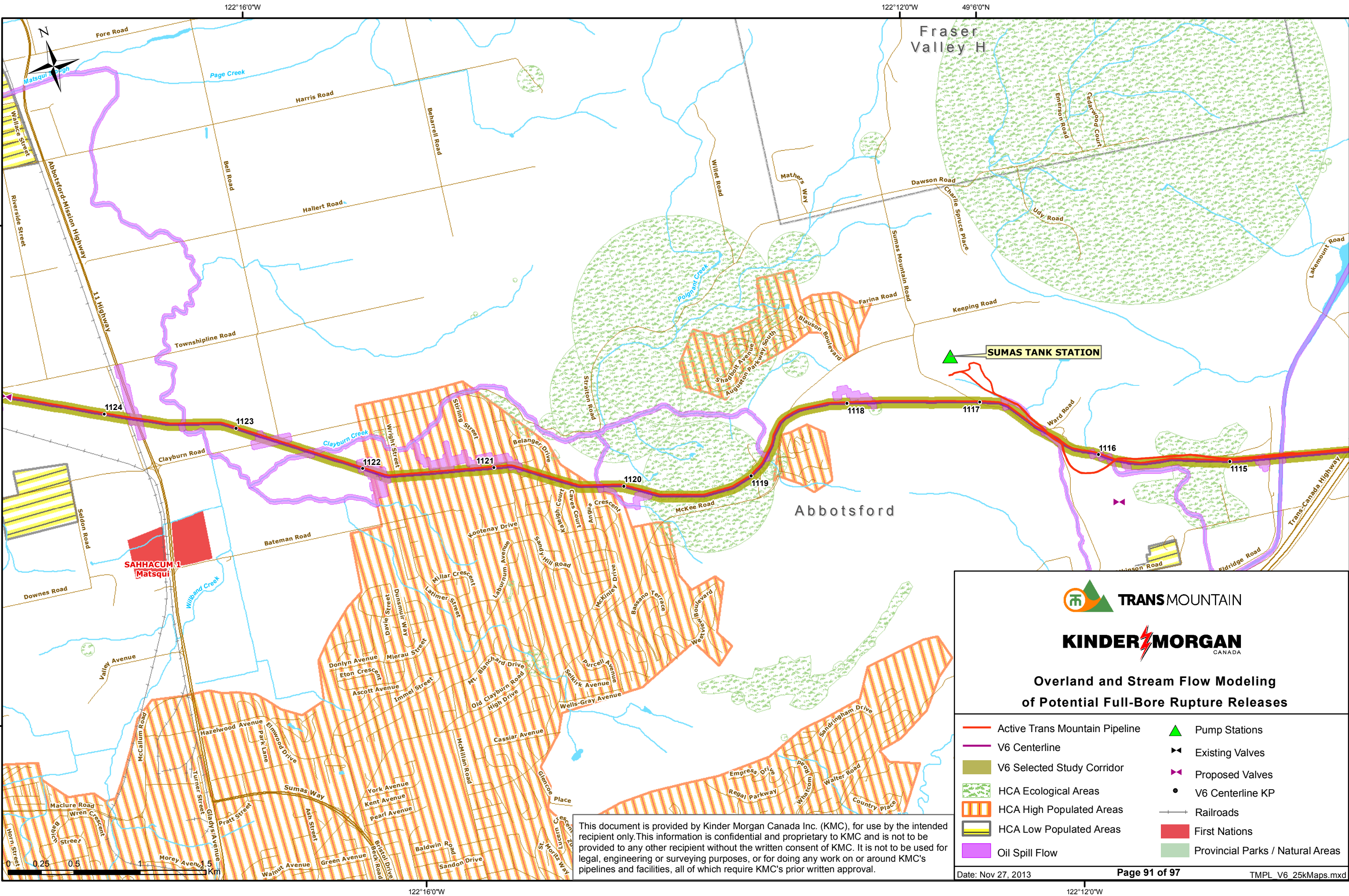
	Active Trans Mountain Pipeline		Pump Stations
	V6 Centerline		Existing Valves
	V6 Selected Study Corridor		Proposed Valves
	HCA Ecological Areas		V6 Centerline KP
	HCA High Populated Areas		Railroads
	HCA Low Populated Areas		First Nations
	Oil Spill Flow		Provincial Parks / Natural Areas

Date: Nov 27, 2013

Page 89 of 97

Tmpl V6 25kMaps.mxd



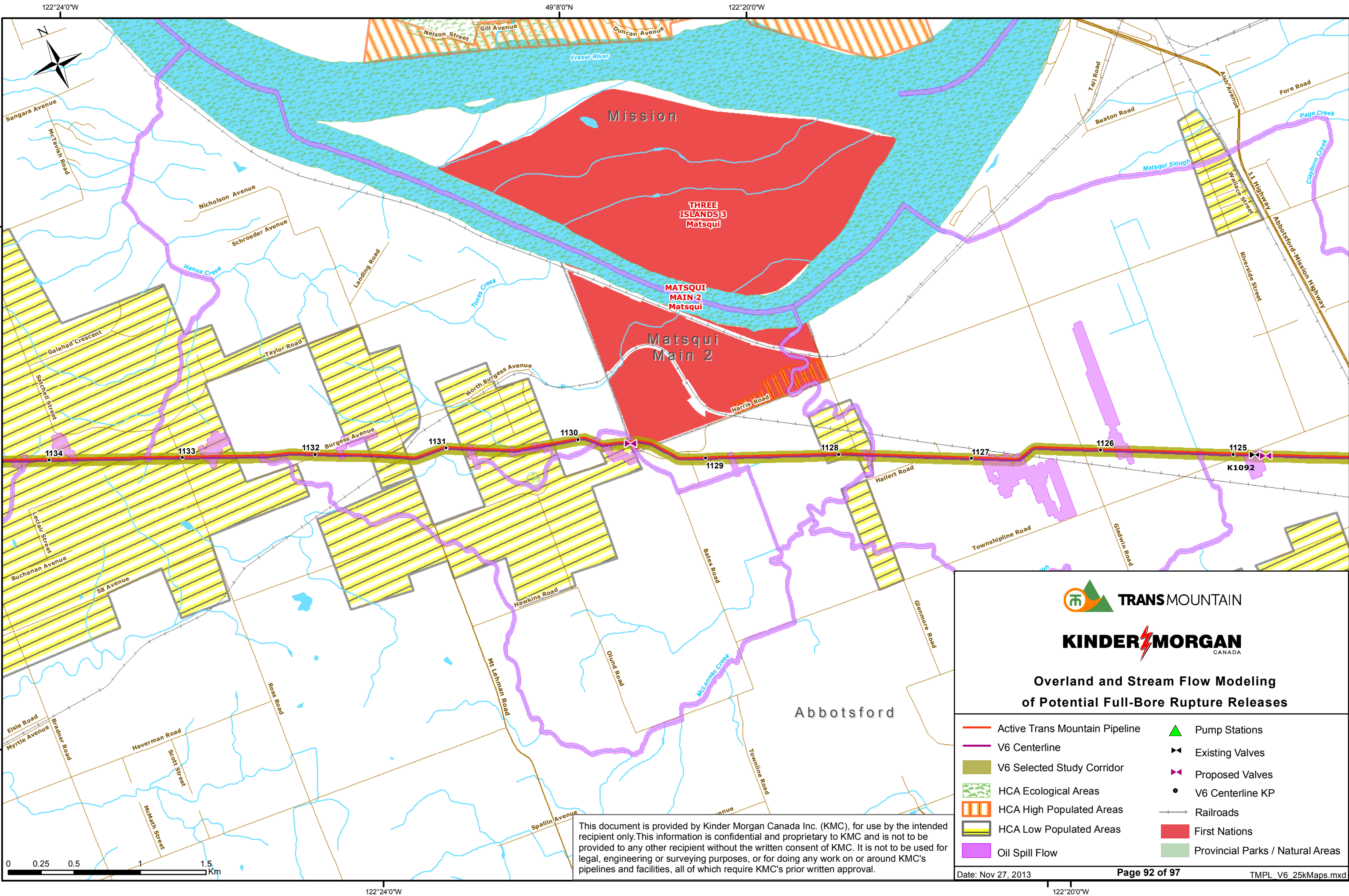


This document is provided by Kinder Morgan Canada Inc. (KMC), for use by the intended recipient only. This information is confidential and proprietary to KMC and is not to be provided to any other recipient without the written consent of KMC. It is not to be used for legal, engineering or surveying purposes, or for doing any work on or around KMC's pipelines and facilities, all of which require KMC's prior written approval.



Overland and Stream Flow Modeling of Potential Full-Bore Rupture Releases

- | | |
|--------------------------------|----------------------------------|
| Active Trans Mountain Pipeline | Pump Stations |
| V6 Centerline | Existing Valves |
| V6 Selected Study Corridor | Proposed Valves |
| HCA Ecological Areas | V6 Centerline KP |
| HCA High Populated Areas | Railroads |
| HCA Low Populated Areas | First Nations |
| Oil Spill Flow | Provincial Parks / Natural Areas |

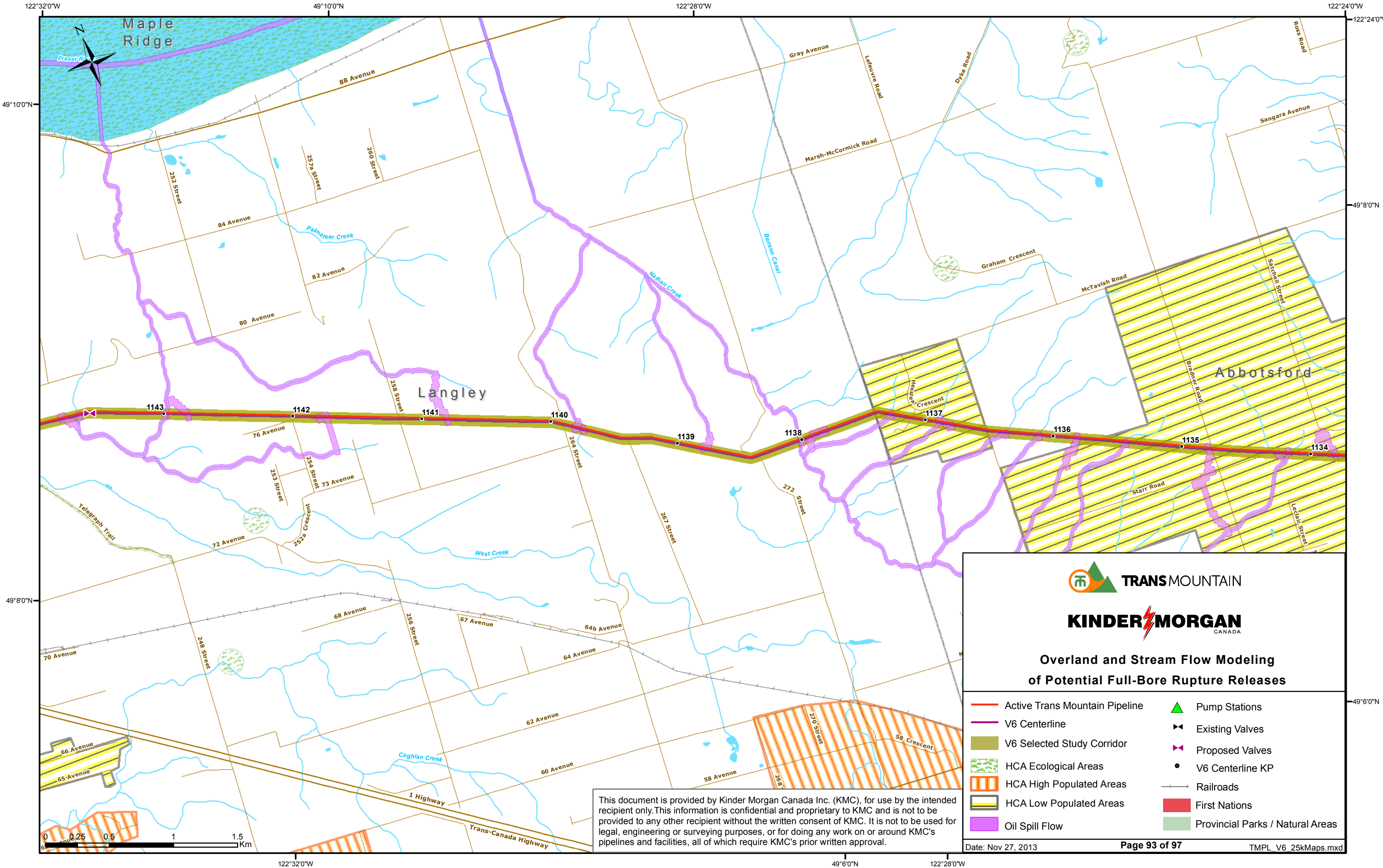


This document is provided by Kinder Morgan Canada Inc. (KMC), for use by the intended recipient only. This information is confidential and proprietary to KMC and is not to be provided to any other recipient without the written consent of KMC. It is not to be used for legal, engineering or surveying purposes, or for doing any work on or around KMC's pipelines and facilities, all of which require KMC's prior written approval.



**Overland and Stream Flow Modeling
of Potential Full-Bore Rupture Releases**

- | | |
|--------------------------------|----------------------------------|
| Active Trans Mountain Pipeline | Pump Stations |
| V6 Centerline | Existing Valves |
| V6 Selected Study Corridor | Proposed Valves |
| HCA Ecological Areas | V6 Centerline KP |
| HCA High Populated Areas | Railroads |
| HCA Low Populated Areas | First Nations |
| Oil Spill Flow | Provincial Parks / Natural Areas |



This document is provided by Kinder Morgan Canada Inc. (KMC), for use by the intended recipient only. This information is confidential and proprietary to KMC and is not to be provided to any other recipient without the written consent of KMC. It is not to be used for legal, engineering or surveying purposes, or for doing any work on or around KMC's pipelines and facilities, all of which require KMC's prior written approval.



Overland and Stream Flow Modeling of Potential Full-Bore Rupture Releases

- | | |
|--------------------------------|----------------------------------|
| Active Trans Mountain Pipeline | Pump Stations |
| V6 Centerline | Existing Valves |
| V6 Selected Study Corridor | Proposed Valves |
| HCA Ecological Areas | V6 Centerline KP |
| HCA High Populated Areas | Railroads |
| HCA Low Populated Areas | First Nations |
| Oil Spill Flow | Provincial Parks / Natural Areas |

